

The Lakeside Software Triple Play

Fund

Virtualize

Optimize

The main issues facing IT departments today for physical to virtual projects are funding, proper assessments, and post virtualization management. Resolve these issues with SysTrack®!

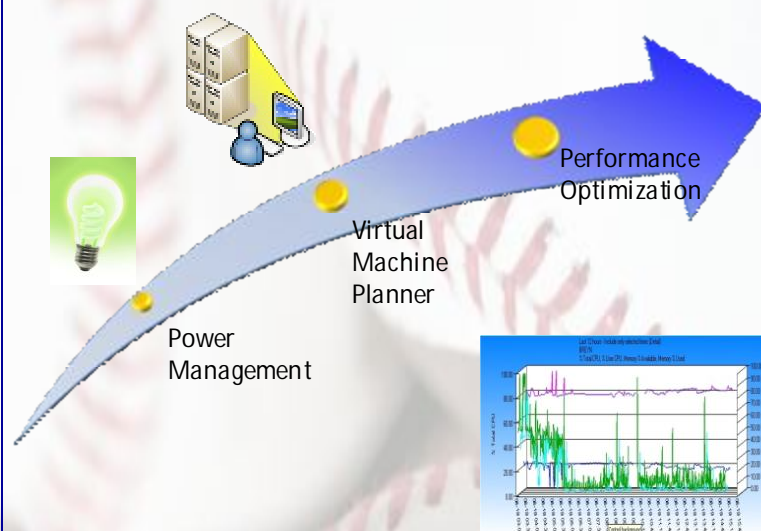
Self Funding

The SysTrack Triple Play Suite provides immediate ROI for projects while addressing What, Who, and How hypervisors should be configured through automated analysis and intelligent reporting. This powerful suite then continues to deliver with best-in-class management and optimization capabilities to provide project ROI benefits that continue long after the implementation period.

The Suite includes:

1. **SysTrack PM (Power Manager)** enables organizations to substantially reduce energy bills and eliminate negative environmental impacts through hands-off PC Power Management.
2. **SysTrack VMP (Virtual Machine Planner)** provides comprehensive pre-virtualization analysis, modeling and planning support for enterprises and data centers. Post-virtualization optimization management suite is also included.
3. **SysTrack Management Suite** provides granular visibility with system, user, and application forensic capabilities and sophisticated reporting intelligence to deliver a best-in-class feature set for Windows® enterprises.

Three Steps to Virtualization Success



Step 1:

Reclaim real budget on wasted energy bills with SysTrack Power Management – **GO GREEN!**

Step 2:

Plan your physical to virtual migration with sophisticated enterprise modeling using SysTrack Virtual Machine Planner

Step 3:

Optimize the performance of your virtualized systems with the SysTrack Suite of tools for continuous improvement

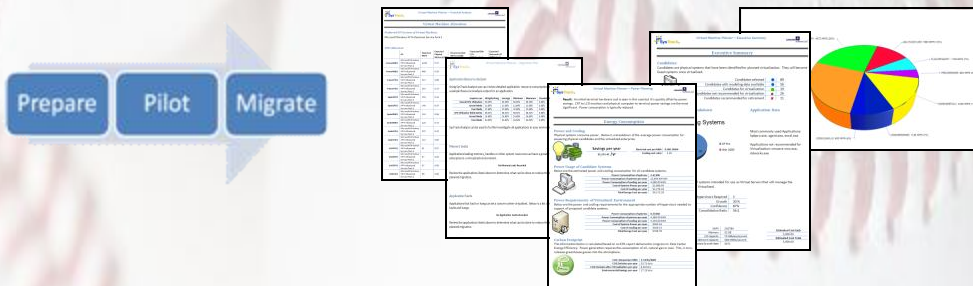
SysTrack PM: PC Power Management



SysTrack Power Management Uses Behavior analysis

- ▶ Analyzes application usage, system performance, user behavior and IT maintenance tasks
- ▶ Creates a dynamic schedule unique to each PC
- ▶ Leverages Sleep and Hibernate for maximum flexibility and energy savings
- ▶ Wakes up the PC before tasks or users are expected to use system
- ▶ Does not require wake-on-LAN
- ▶ Accommodates all user behavior and maintenance activities automatically
- ▶ Responds to changing schedules dynamically

SysTrack Virtual Machine Planner



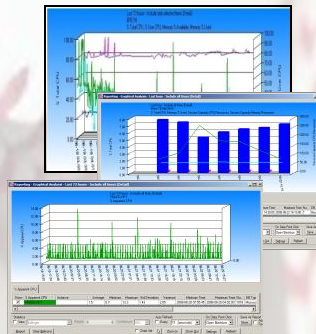
SysTrack PPM Process Reports Include:

- ▶ Complete process documentation integrated with your environmental data
- ▶ Highlighted areas that need attention
- ▶ Identified applications of concern for further investigation
- ▶ Identified systems with performance issues or hardware concerns
- ▶ Identified users exhibiting behavior that may be at risk in a virtualized environment

SysTrack Optimization

Continuously improve your infrastructure

- ▶ System, User and Application forensic analysis
- ▶ Resolve complex issues with the Blackbox Date Recorder
- ▶ Secure your environment with built-in SysLock®
- ▶ Reduce helpdesk trouble tickets with proactive dashboard alarming and notification



Product Suite Focus

Fund with SysTrack PM
Virtualize with SysTrack VMP
Optimize with SysTrack

SysTrack Management Suite

SysTrack PM
SysTrack VMP
SysTrack

O/S Compatibility

Windows® Server 2008
Windows Vista
Windows Server 2003
Windows XP
Windows 2000
Window NT 4.0

2008 Lakeside Software, Inc. All rights reserved.

Lakeside Software, SysTrack and SysLock are trademarks or registered trademarks of Lakeside Software, Inc. in the United States and other countries. All other trademarks are the property of their respective owners and may be registered in the United States and other countries.